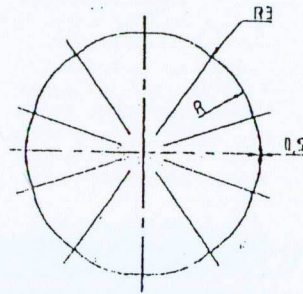
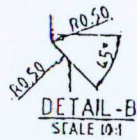
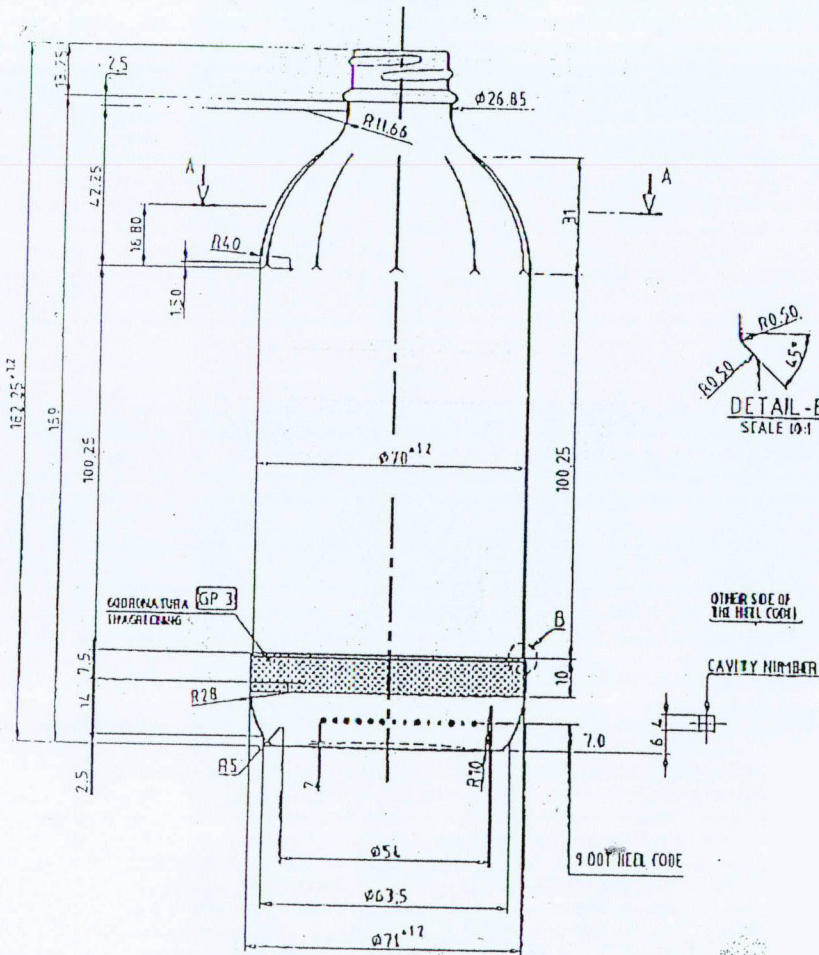


10 FLUTES EQUALLY SPACED
AROUND THE BOTTLE AT SHOULDER
0.5mm DEEP AS SHOWN



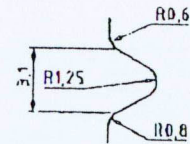
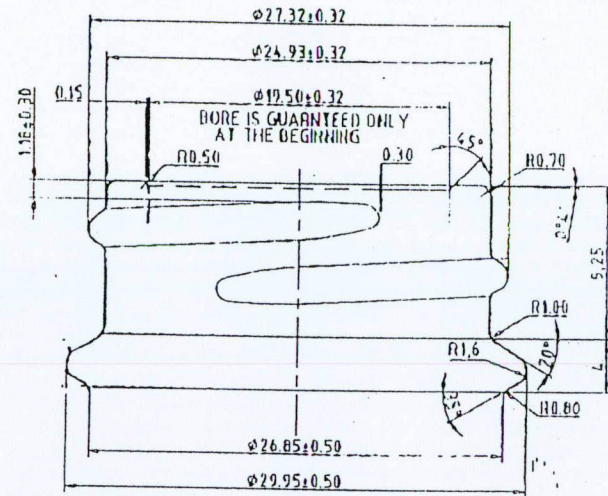
SECTION A-A



OTHER SIDE OF
THE NECK CODE

CAVITY NUMBER

9 007 NECK CODE



THREAD DETAIL

FINISH 20mm 5SS STANDARD

MIN. THRU BORE $\phi 17.00$ mm.
PITCH 6 THREAD x INCH
THREAD PITCH mm. 4 233
THREAD TURNS 1
CUTTER DIA. 12.70
START AT 90° FROM OPENING
THREAD INCLINATION 2° 57' 10"